



FLORENZA GRANITO PVT LTD.

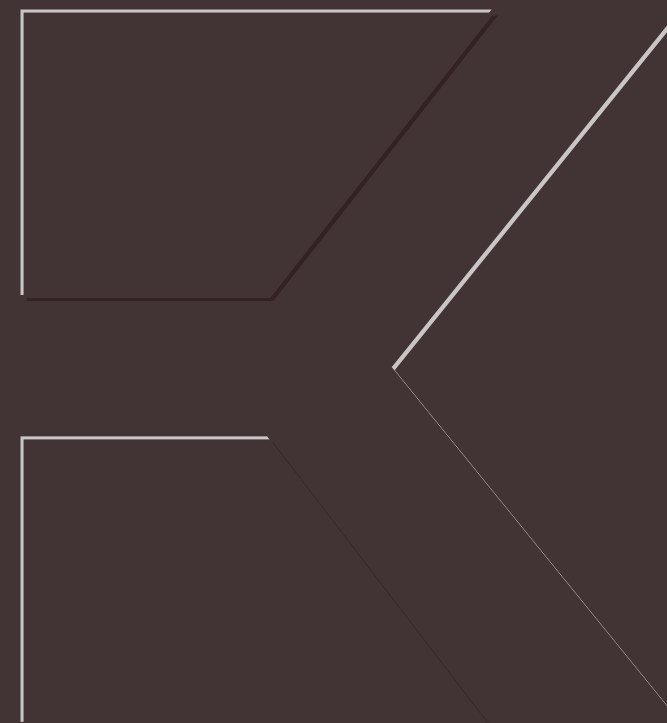
8-A National Highway, Sartanpar Road,  
Ratavirda, Wakaner, Gujrat (363621).

[info@kremen.in](mailto:info@kremen.in)  
[www.kremen.in](http://www.kremen.in)

Customer Care: +91 75758 00103



FULLBODY COLLECTION



ROCK SERIES

# FULLBODY

COLLECTION

Incepted in the year 2016, Fiorenza Granito Pvt. Ltd. entered the tile industry with brand name "**KREMEN**". **KREMEN** has come with a fresh, innovative and positive outlook towards exploring better ways to fulfill the architectural requirements of today's interior design concepts.

The plant is equipped with a state-of-the-art, highly advanced manufacturing facility. Made from quality-certified raw materials using innovative and modern technology, the tiles are a perfect blend of modern design, aesthetics, and lasting strength. **KREMEN** vitrified tile design concepts are unique and truly architectural. **KREMEN** offers complete tiling solutions across a wide product profile and diverse architectural needs.

**KREMEN** Vitrified Tiles has established itself as a leader in innovation and design in the export market. **KREMEN** Vitrified Tiles vows to continue excelling in exports with the best quality vitrified tiles. **KREMEN** Vitrified Tiles are exported to Europe, the Middle East, Asia, and Africa.

# FULL BODY FULL IMPACT

Bringing your dream space to life



# EXPLORE THE EXQUISITE FINISHES

Which brings life to spaces

Our Fullbody Collection features three distinct and thoughtfully curated finishes — Polished, Matt, and Rustic Punch each designed to revamp your spaces with character and sophistication.

Whether you are looking for a tactile experience, a subtle feel, or shiny elegance, our finishes are ready to bring your vision to life. They are designed to complement your everyday routine and still effortlessly provide lasting performance. Upgrade to refined aesthetics with these finishes that are a style statement.



Rustic Punch

Matt

Polished





REDEFINING  
SPACES

with **aesthetics & functionality**

Stay worry-free with our collection, designed to deliver unmatched style and long-lasting performance. Resistant to all weather extremes, these tiles keep both your indoor and outdoor spaces strong, stunning, and low-maintenance, year after year. Built to endure the harshest conditions, they offer exceptional performance because of their durable construction. The fullbody composition guarantees a lasting impression without compromising on elegance.

# COLOR PALETTE GUIDE

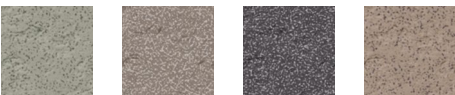
for every style

600x600mm (8mm Thickness)

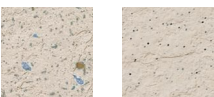
Semi light color



Dark color



Light color



Plain color

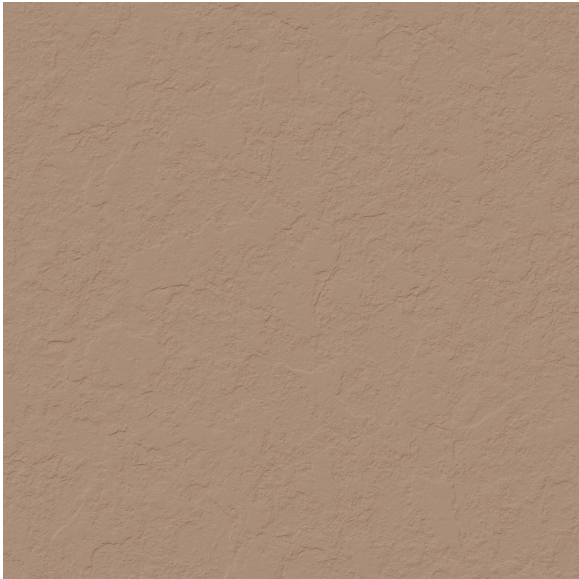


E

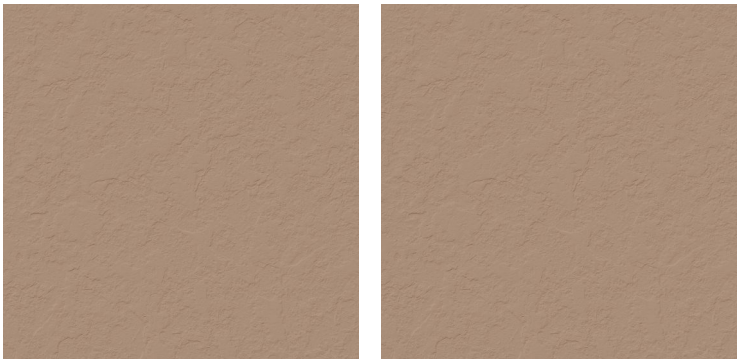
Engineered for excellence, our collection combines superior materials with advanced technology to deliver surfaces that perform as beautifully as they look. From texture to tone, each finish is designed to endure while maintaining its original sophistication.



ROCK SERIES



PASTEL ORANGE



PASTEL ORANGE(Matt)

Applicable on  
Wall / Floor

Available Finish  
Rock Surface

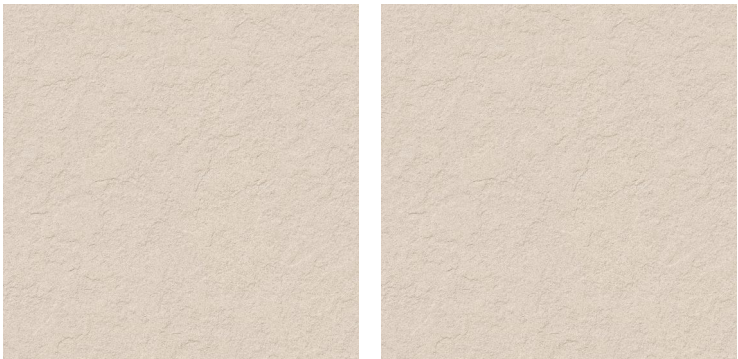




ROCK SERIES



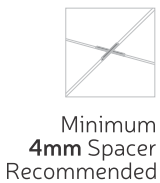
CREMA



CREMA(Matt)

Applicable on  
Wall / Floor

Available Finish  
Rock Surface





ROCK SERIES



BEIGE



BEIGE(Matt)

Applicable on  
Wall / Floor

Available Finish  
Rock Surface





ROCK SERIES



WHITE



WHITE(Matt)

Applicable on  
Wall / Floor

Available Finish  
Rock Surface

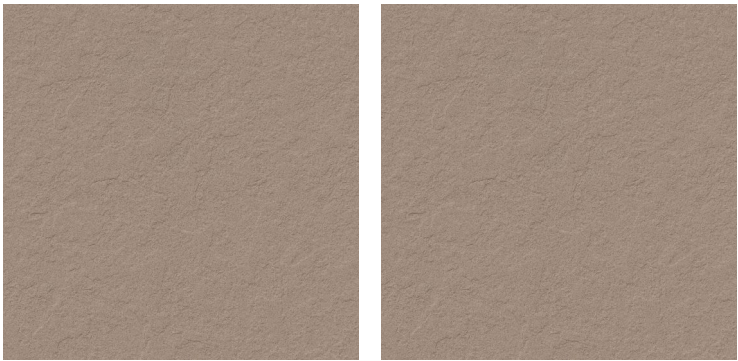




ROCK SERIES



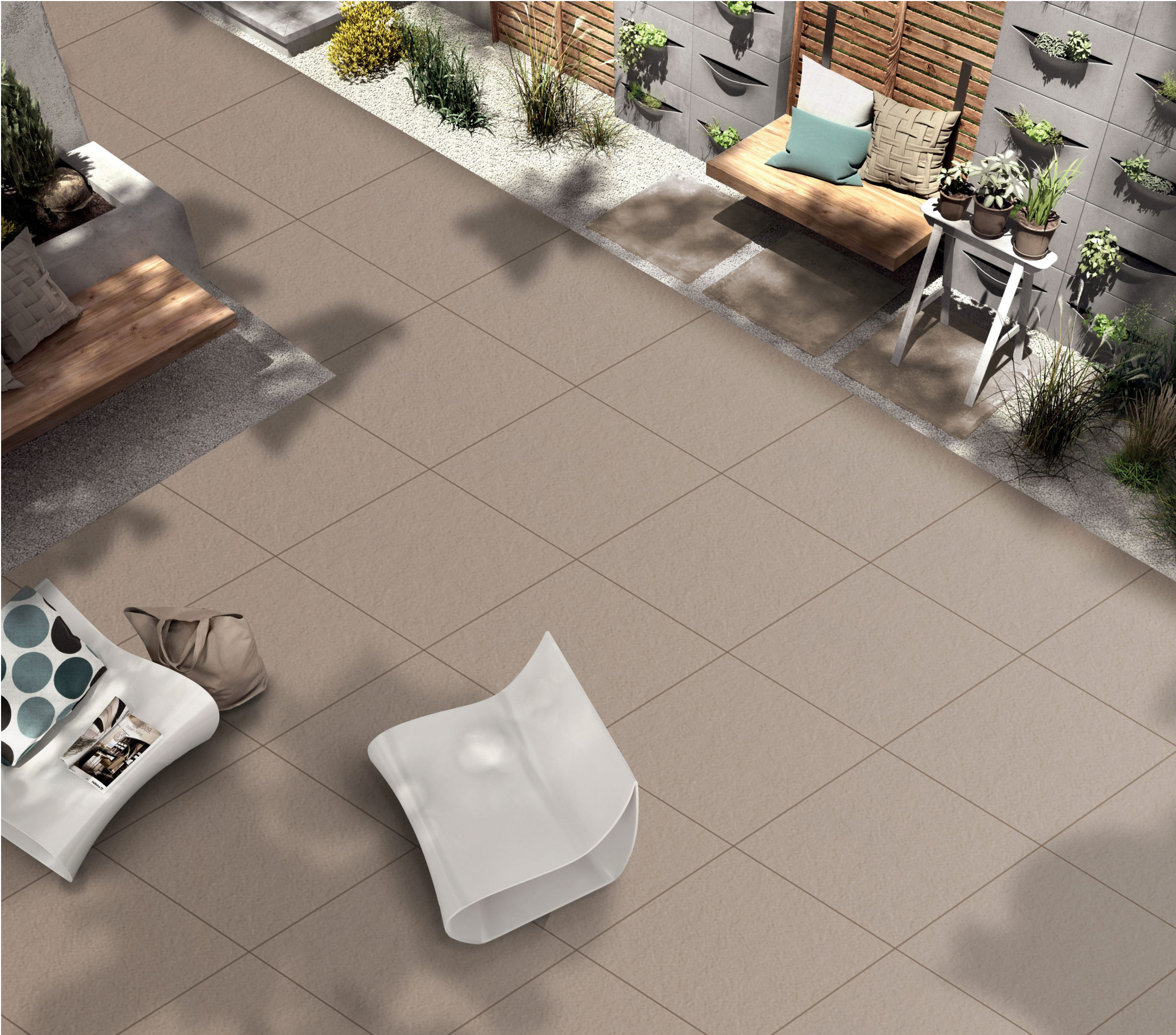
ORANGE



ORANGE(Matt)

Applicable on  
Wall / Floor

Available Finish  
Rock Surface

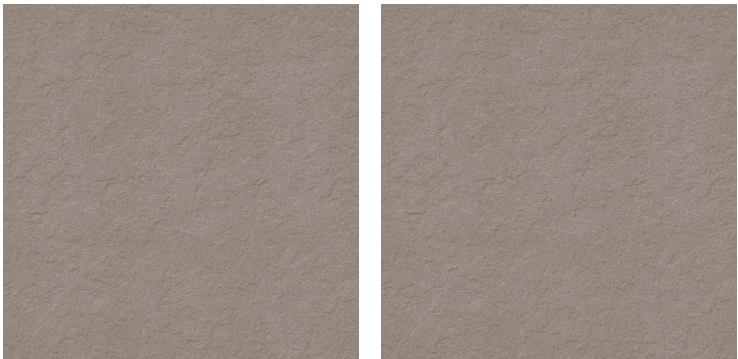




ROCK SERIES



EARTH



EARTH(Matt)

Applicable on  
Wall / Floor

Available Finish  
Rock Surface



Minimum  
4mm Spacer  
Recommended

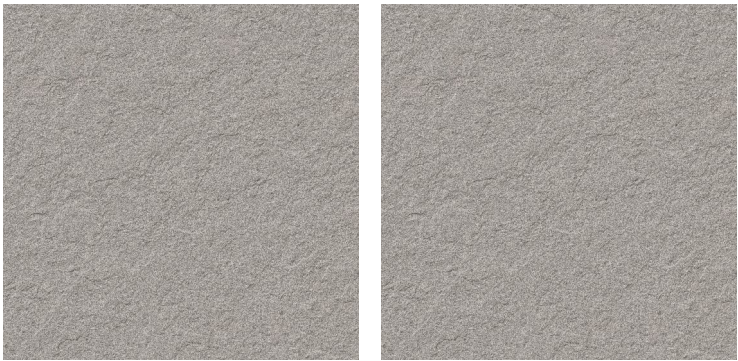




ROCK SERIES



GREY



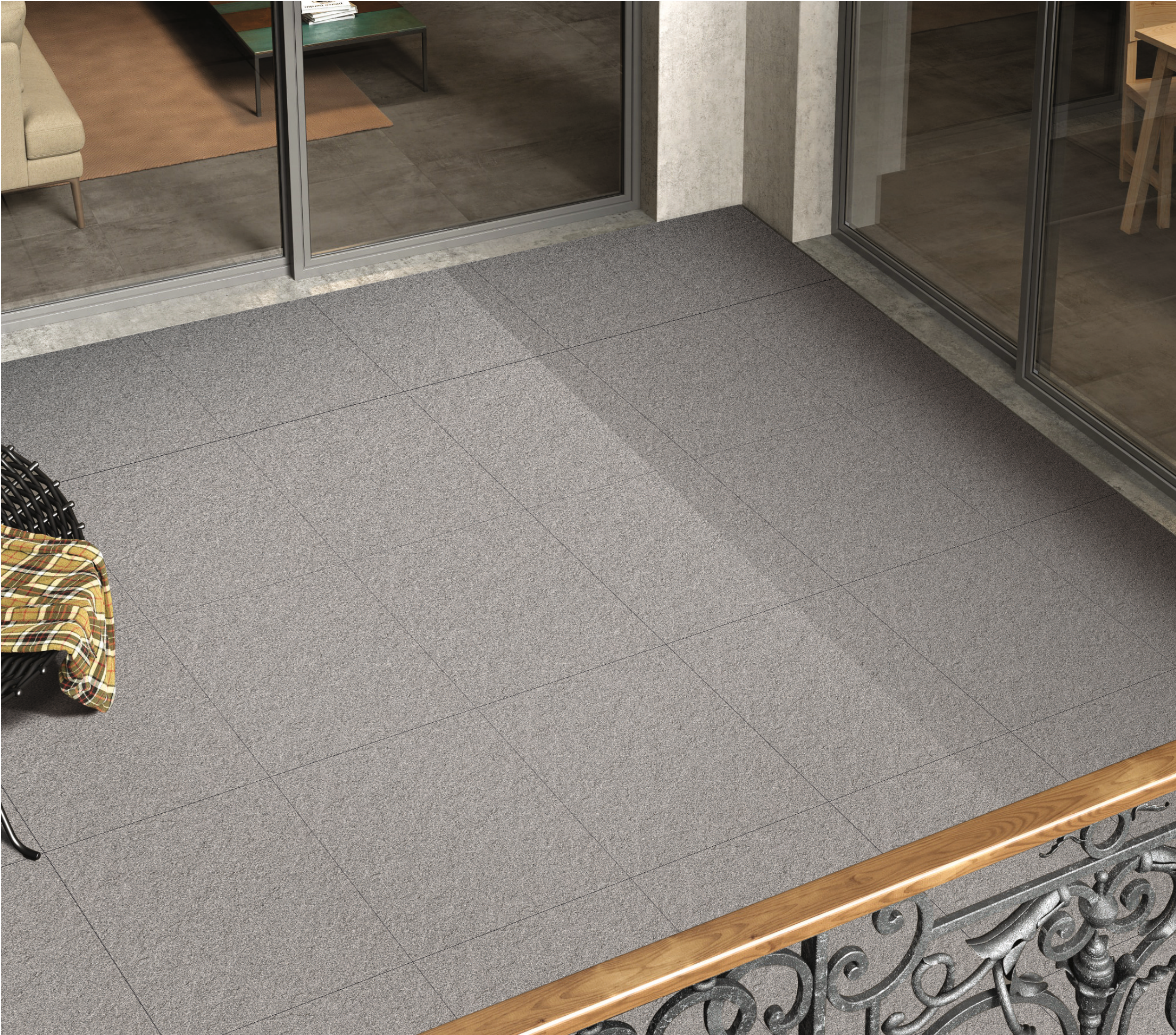
GREY(Matt)

Applicable on  
Wall / Floor

Available Finish  
Rock Surface

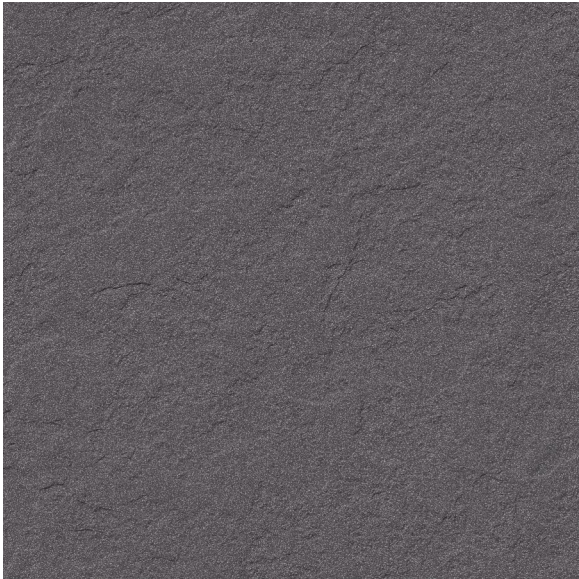


Minimum  
4mm Spacer  
Recommended

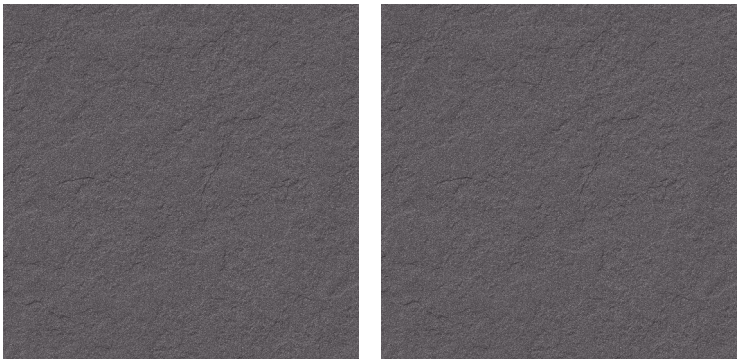




ROCK SERIES



BLACK



BLACK(Matt)

Applicable on  
Wall / Floor

Available Finish  
Rock Surface



Minimum  
4mm Spacer  
Recommended

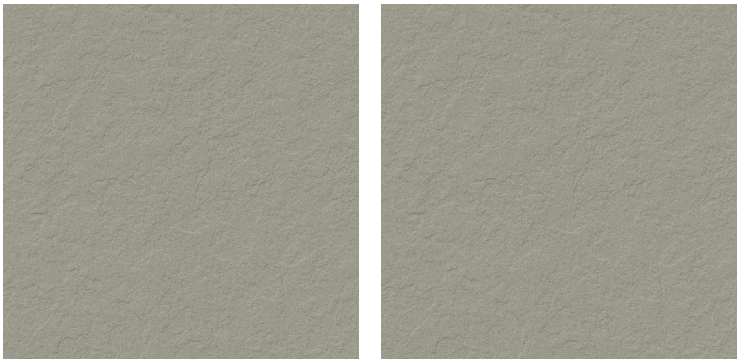




ROCK SERIES



KOTA



KOTA(Matt)

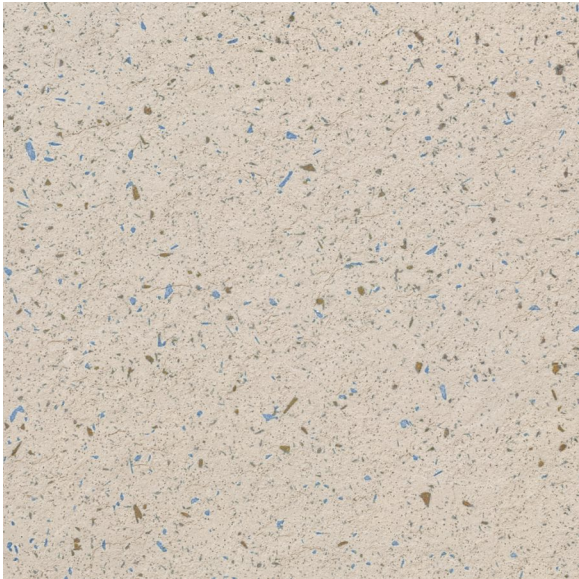
Applicable on  
Wall / Floor

Available Finish  
Rock Surface

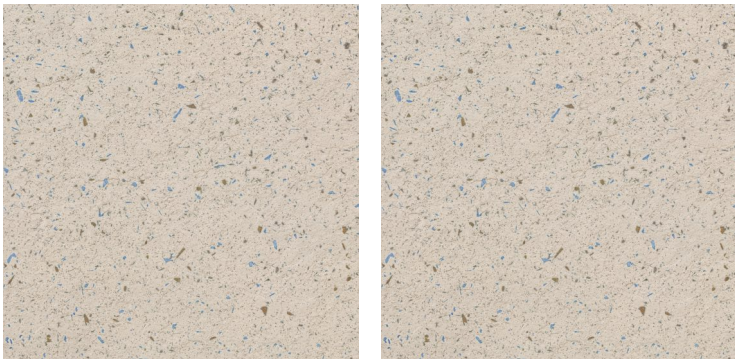




ROCK SERIES



CRYSTAL



CRYSTAL(Matt)

Applicable on  
Wall / Floor

Available Finish  
Rock Surface



Minimum  
4mm Spacer  
Recommended

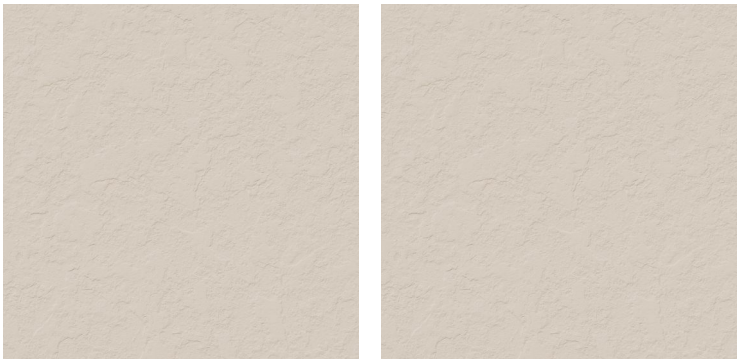




ROCK SERIES



MINT



MINT(Matt)

Applicable on  
Wall / Floor

Available Finish  
Rock Surface

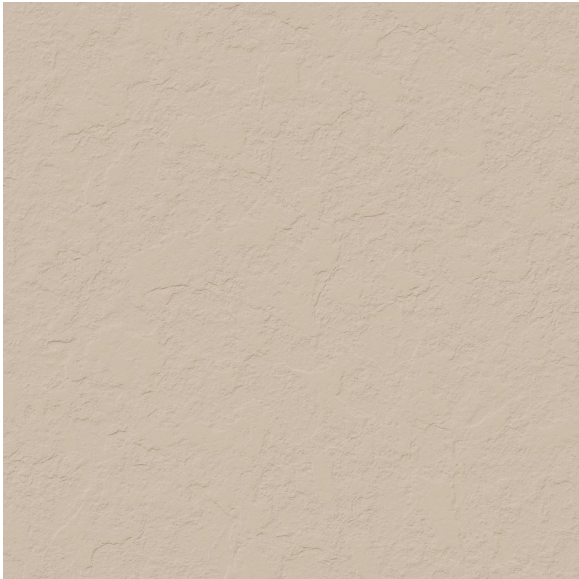


Minimum  
4mm Spacer  
Recommended





# ROCK SERIES



DOMINO



DOMINO(Matt)

Applicable on  
Wall / Floor

Available Finish  
Rock Surface



Minimum  
4mm Spacer  
Recommended

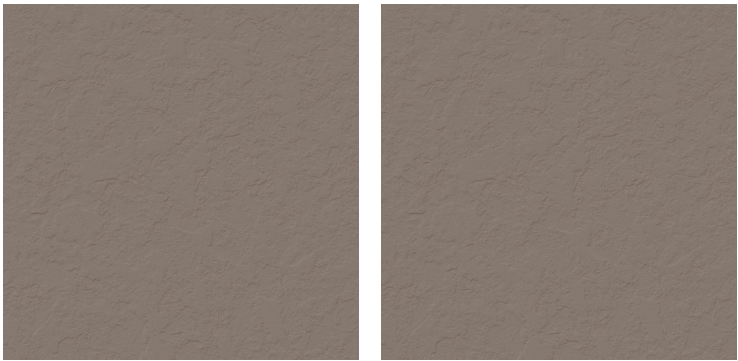




ROCK SERIES



MUSHROOM



MUSHROOM(Matt)

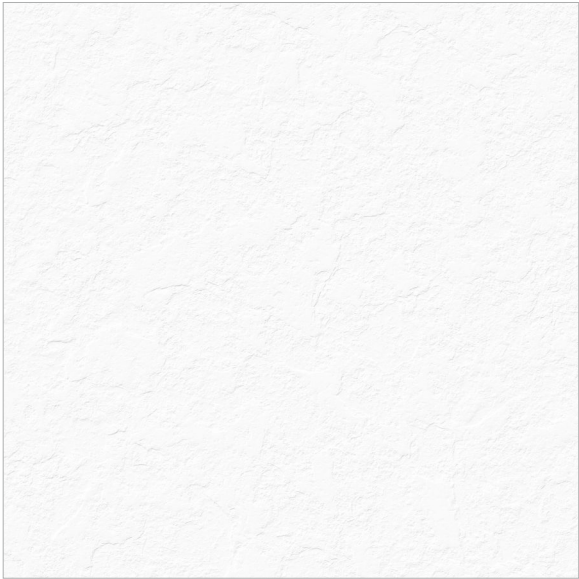
Applicable on  
Wall / Floor

Available Finish  
Rock Surface

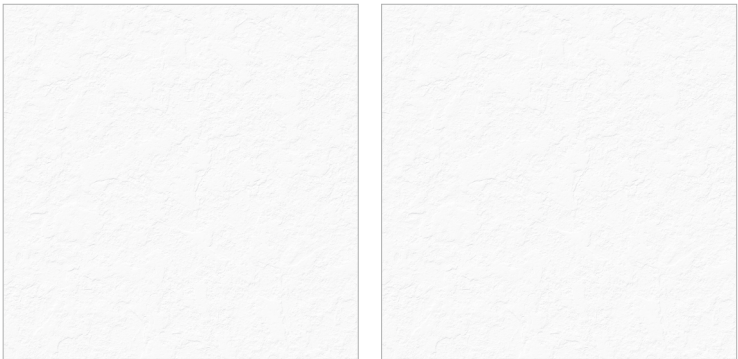




ROCK SERIES



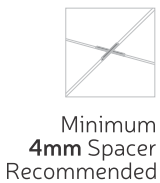
POLAR WHITE



POLAR WHITE(Matt)

Applicable on  
Wall / Floor

Available Finish  
Rock Surface

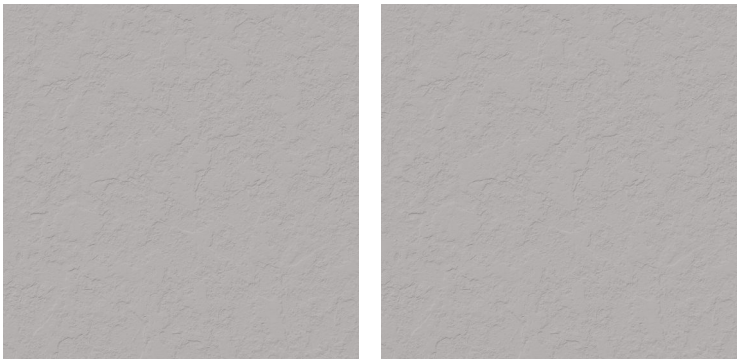




ROCK SERIES



DOVE



DOVE(Matt)

Applicable on  
Wall / Floor

Available Finish  
Rock Surface

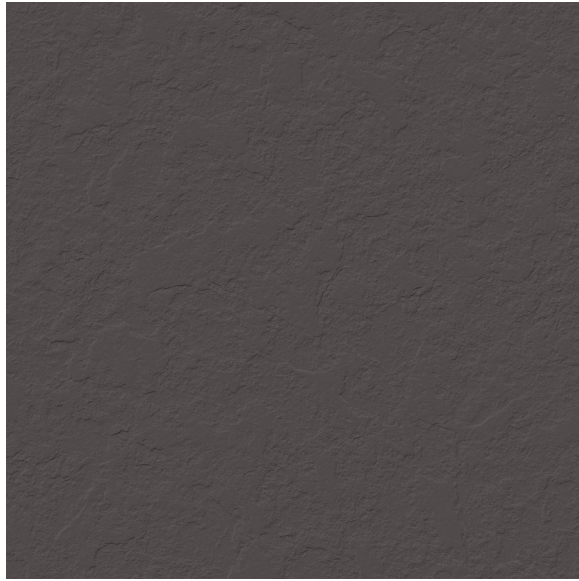


Minimum  
4mm Spacer  
Recommended

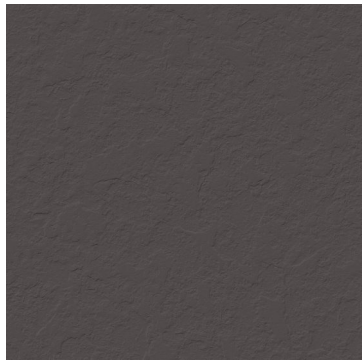




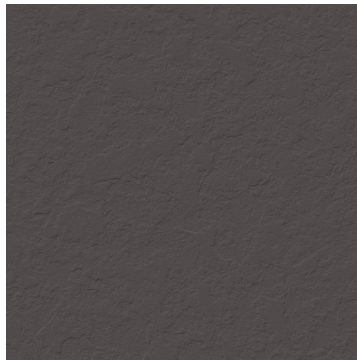
# ROCK SERIES



CARBON BLACK



CARBON BLACK(Matt)

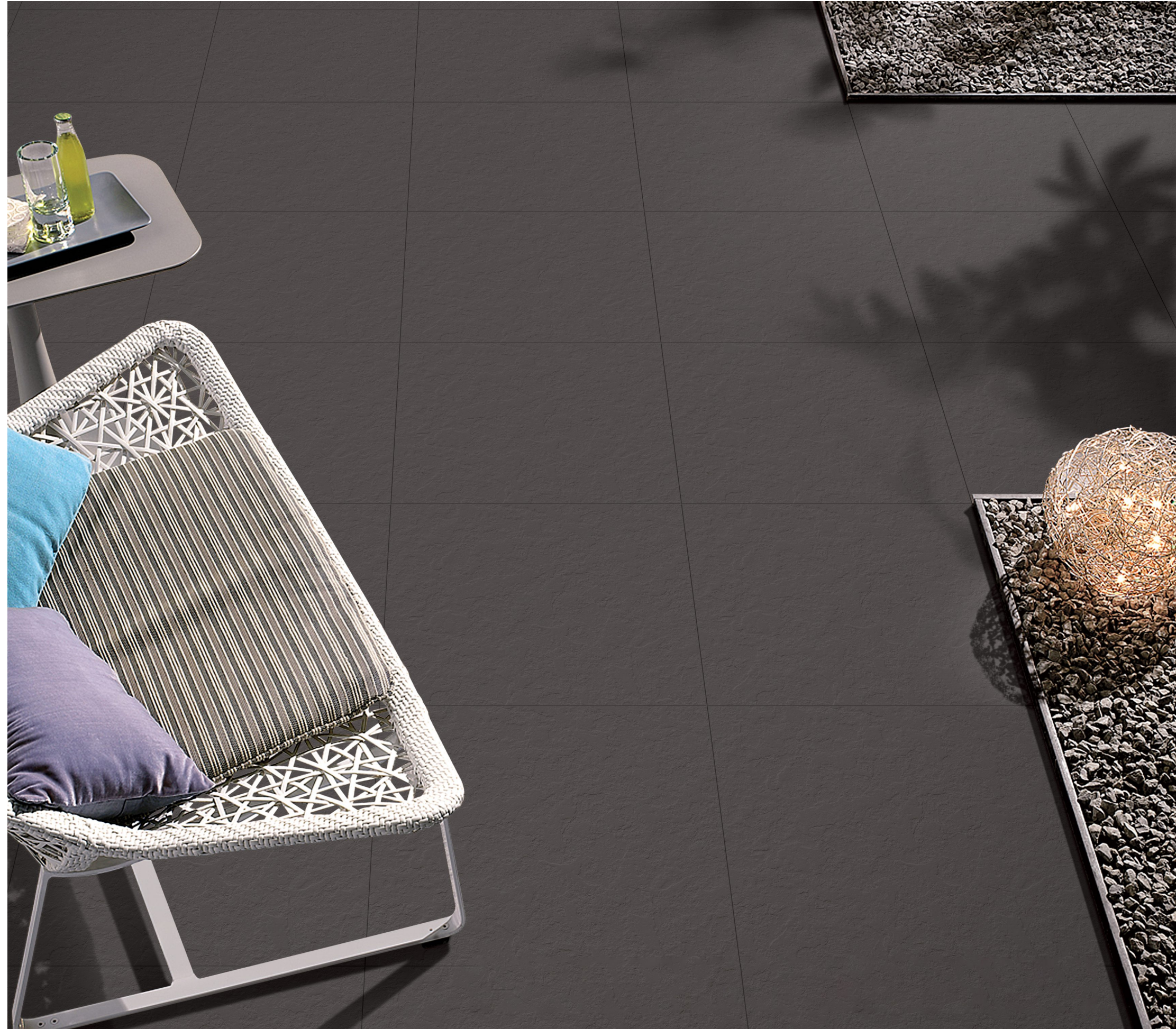


Applicable on  
Wall / Floor

Available Finish  
Rock Surface



Minimum  
4mm Spacer  
Recommended

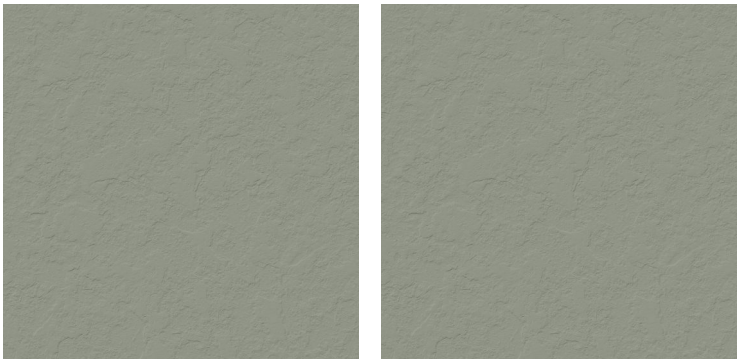




ROCK SERIES



OLIVE



OLIVE(Matt)

Applicable on  
Wall / Floor

Available Finish  
Rock Surface





TECHNICAL SPECIFICATIONS

TECHNICAL DETAILS	STANDARD AS PER ISO-13006/EN176 GROUP BIa	MEAN VALUE OF FULL BODY VITRIFIED TILES	METHOD OF TEST
Deviation In Length & Width	± 0.60%	± 0.10%	ISO-10545-2
Deviation In Thickness	± 5.00%	± 2.00%	ISO-10545-2
Straightness Of Sides	± 0.50%	± 0.10%	ISO-10545-2
Rectangularity	± 0.60%	± 0.10%	ISO-10545-2
Surface Flatness	± 0.50%	± 0.10%	ISO-10545-2
Glossiness	Gloss Meter	Min. 90%	Glossometer
Water Absorption	≤ 0.50%	E ≤ 0.05%	ISO-10545-3
Breaking Strength	1300 N	2000 N	ISO-10545-4
Abrasion Resistance	Max. 175mm	Max. 145mm <sup>3</sup>	ISO-10545-6
Mohs Hardness	Min. 6	≤ 6*	EN101
Frost Resistance	Frost Proof	Frost Proof	ISO-10545-12
Thermal Shock	No Damage	No Damage	ISO-10545-9
Moisture Expansion	Nil	Nil	ISO-10545-10
Thermal Expansion	< 9 x 10 <sup>-6</sup>	< 6 x 10 <sup>-6</sup>	ISO-10545-8
Resistance of House Hold Chemical	No Damage	No Damage*	ISO-10545-13
Stain Resistance	Resistance	Resistance*	ISO-10545-14
Slip Resistance (Friction Co-efficient)	> 0.40	> 0.40	ISO-10545-17

PACKING DETAILS

SIZES	THICKNESS	PIECES / BOX	WEIGHT / BOX (Approx)	COVERAGE AREA / BOX
600x1200mm	8 mm	2 Pieces	27.00 kg	15.5 ft <sup>2</sup> or 1.44 mtr <sup>2</sup>
600x600mm	8 mm	4 Pieces	25.50 kg	15.5 ft <sup>2</sup> or 1.44 mtr <sup>2</sup>
600x600mm	12 mm	3 Pieces	28.00 kg	11.63 ft <sup>2</sup> or 1.00 mtr <sup>2</sup>

